



**VILLAGE  
CHURCH**

Presbyterian (USA)



## Service of Worship

Jan. 25, 2026 • 9 and 11 a.m.

### About Today's Service

In this sermon series, we will explore four questions that Jesus asked to better understand Jesus and how he wants us to live today. Today, Rev. Dr. Diane Janssen Hemmen will preach on the question "Which of these three was a neighbor?"



Prelude

Dr. Elisa Bickers, organ

Words of Welcome

Rev. Dr. Diane Janssen Hemmen

Introit

Meditation on *Finlandia*  
arr. Brenda Portman

\*Call to Worship

Rev. Alice Whitson

We come with willing hearts and eager minds.

**Lead us in your truth, O God of our salvation!**

We come in our weakness and from our wanderings.

**Love us into life, and teach us your ways, O God of our salvation!**

We come in our need.

**Remind us of your abundance, O God of our salvation,  
and empower us to live our witness to your grace!**

\*Hymn 612

*We Praise You, O God*

Prayer of Confession

**Merciful God,**

**we confess that we have sinned against you**

**in thought, word, and deed,**

**by what we have done,**

**and by what we have left undone.**

**We have not loved you with our whole heart and mind and strength.**

**We have not loved our neighbors as ourselves.**

**In your mercy forgive what we have been,**

**help us amend what we are,**

**and direct what we shall be,**

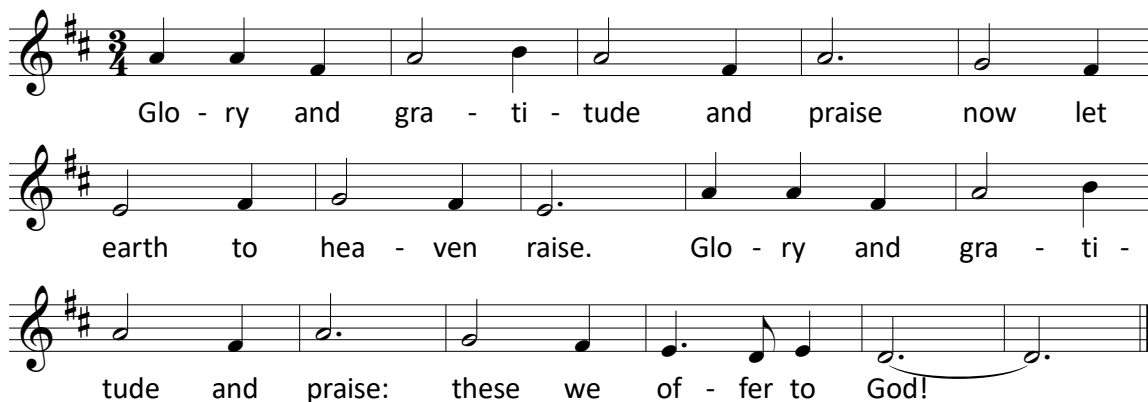
**so that we may delight in your will and walk in your ways,**

**to the glory of your holy name.**

(silent prayer)

Assurance of God's Grace

\*Response to Assurance



\*Passing the Peace of Christ

## PROCLAMATION OF THE WORD

Anthem

*When We Love*

by Elaine Hagenberg and Charles Anthony Silvestri;  
Village Choirs with Dr. Josh Maize, conductor

Prayer for Illumination

Diann Markley (9 a.m.); Ron Witzke (11 a.m.)

Scripture

Luke 10:25-37 (pg. 946)

Sermon

*Which of these three was a neighbor?*

## RESPONSE TO THE WORD

\*Hymn 63

*The Lord Is God*

Prayers of the People and The Lord's Prayer

**Our Father, who art in heaven, hallowed be thy name.**

**Thy kingdom come, thy will be done, on earth as it is in heaven.**

**Give us this day our daily bread;**

**and forgive us our debts, as we forgive our debtors;**

**and lead us not into temptation, but deliver us from evil.**

**For thine is the kingdom and the power and the glory, forever. Amen.**

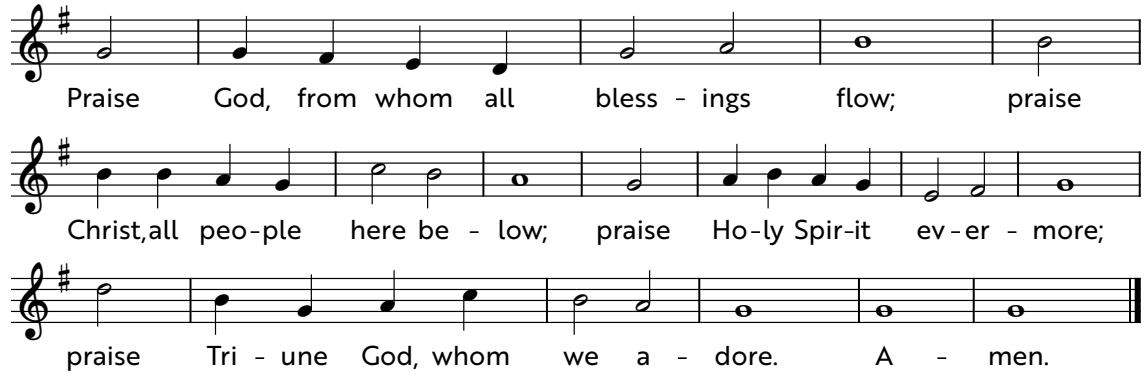
Call for the Offering

Offertory Anthem

*How Can I Keep from Singing?*  
arr. Rollo Dilworth; Alegría Choir (9 a.m.)

*Canzonetta in G Major*  
by Dieterich Buxtehude (11 a.m.)

\*Response



Praise God, from whom all bless - ings flow; praise  
Christ, all peo-ple here be - low; praise Ho-ly Spir-it ev-er - more;  
praise Tri - une God, whom we a - dore. A - men.

\*Prayer of Dedication

## GOD'S PEOPLE ARE SENT

\*Hymn 317

*In Christ There Is No East or West*

\*Benediction

\*Benediction Response



A - men, a - men, a - men, a - men, a - men,  
a - men, a - men, a - men, a - men.

\*Postlude

*And Again I Say, Rejoice!*  
arr. Brenda Portman

*\*All who are able may stand*

## SUNDAY FAITH FORMATION

ADULTS	"Village Forum"	9:30-10:30 a.m.	Room 126
	"The Faith Journey"	10:10-10:50 a.m.	Room 124
YOUTH	Grades 7-12	9-10 a.m.	Room 333
KIDS	Pre-K and 4-yr-olds	9-10 a.m.	Room 106
	Grades K-6	9-10 a.m.	Room 307

**Child care** is available downstairs during both services. Bring infants through 23 mo. to Room 114 and ages 2-3 to Room 109. Parents, please keep your cell phones on!

**The flowers in the chancel today** are given in loving memory of Judy Lockett by her sisters Nancy Bishop, Sarah Reeves, and Cynthia Schrier.

**Village U** – Our Spring 2026 catalog is now available online! Visit [villagepres.org/village-u](https://villagepres.org/village-u) or scan the QR code to the right. Please note: Not all classes require registration. If a class does require registration, the registration link will be listed with the class title. Child care is available for our Wednesday evening classes (please indicate that you need child care when you register). Questions? Email Desiree Keyes at [desiree.keyes@villagepres.org](mailto:desiree.keyes@villagepres.org).



## ADULT FAITH FORMATION

**Understanding Life On The Border** – 9:30 - 11:30 a.m. Saturday, Jan. 31, Friendship Hall, Mission Campus. Rev. Mark Adams, of Frontera de Cristo, will share stories of the continuing work on both sides of the border near Douglas, Arizona and Agua Prieta, Sonora. This will be a morning of insight and inspiration for all who share God's concerns for our immigrant neighbors. Register at [villagepres.org/events](http://villagepres.org/events)

**Men's Breakfast Gathering** – 8-10 a.m. Tuesday, Jan. 27, Heritage Dining Room (230), Mission Campus. We'll enjoy breakfast and fellowship while we listen to Harry Soyster present on the religious ideas of Carl June & Scott Peck. We will explore these ideas as witnesses to the validity of the gospel. \$8 suggested donation. Pay online when you register: [villagepres.org/events](http://villagepres.org/events)

## ENGAGEMENT

**New Member Luncheon** – Noon-1:30 p.m. Feb. 1, Room 232/233. Childcare is available. If you're interested in becoming a member of Village Church, you're invited to join us. Contact [carol.solenberger@villagepres.org](mailto:carol.solenberger@villagepres.org) to RSVP and for more information.

**Wednesday Family Dinner** - 5:30-6:30 p.m. Wednesdays. Join us for food and fellowship. To register, visit [villagepres.org/wfd](http://villagepres.org/wfd). To volunteer, email [engagement@villagepres.org](mailto:engagement@villagepres.org).

**Seniors' Afternoon** – 1 p.m. Friday, Jan. 30, Welcome Center. Enjoy games and social time with other seniors. Bring your own board games, learn to play canasta, and enjoy good company and light refreshments! Bring a friend and spread the word!

## MISSION MINISTRY

**Food Pantry & Clothes Closet** – We are beginning to collect crackers and hearty soups for Souperbowl Sunday (Feb. 8). Please bring items any Sunday in January.

## MUSIC MINISTRY

**St. Olaf College Choir conducted by Anton Armstrong** – 3 p.m. Sunday, Feb. 1, Sanctuary. Composed of 75 mixed voices, the St. Olaf Choir is hailed as one of the nation's premier a cappella ensembles, renowned for its artistry and beauty of sound. Tickets are \$40 and \$10 for all students, available at [stolaf.edu/tickets/choir](http://stolaf.edu/tickets/choir) or 800-363-5487.

**Kansas City Wind Symphony presents "Chamber Winds"** – 3 p.m. Saturday, Feb. 7, Mission Campus Sanctuary. Featuring small ensembles and exquisite music. Selected repertoire will include Mutations from Bach by Samuel Barber. Free admission.

**2nd Thursday Recital** – 12:15 p.m. Thursday Feb. 12, Mission Campus Chapel. Please join us for a noontime recital featuring Bonny and Trent Green, soprano and tenor. There will be a short reception following the performance. Free admission.

## PASTORAL CARE

**Widowers' Support Group** – If your spouse has died or is living with dementia or Alzheimer's disease, you are not alone. Consider listen, share and find fellowship with other men who are walking the same path as you. Meetings are at 9 a.m. every Thursday in room 132 at the Mission campus.

## PRESBYTERIAN WOMEN

**Motherhood to Matriarch** – 9-11 a.m. Feb. 21, Friendship Hall. Ginger Rothhaas from Compassionate Fix will lead a conversation about women's journey from nurturing life to shaping a legacy. Register at [villagepres.org/events](https://villagepres.org/events)

**Operation Breakthrough Needs Volunteers** to help with year-around tutoring programs, one hour/week. Volunteers work one-on-one to assist the children with literacy and mathematics. Email [charlottesdavison@gmail.com](mailto:charlottesdavison@gmail.com) with questions and to volunteer.

**Mahjong Monday** – 6:30-8 p.m. Feb. 9, Heritage Dining Room. Join us to play Mahjong on the second Monday each month. Please email [carol.solenberger@villagepres.org](mailto:carol.solenberger@villagepres.org) to RSVP to ensure adequate supplies and enough players.

## YOUNG ADULT MINISTRY

**Y.A.M. (Young Adult Ministry) Night** – All 20s and 30s are invited to join us every Wednesday as we gather, play games, study Scripture and celebrate one another. Dinner at 5:30 p.m. in Friendship Hall, programming at 6:15 p.m. in the Young Adult Room. Join us!

## YOUTH MINISTRY

**Youth Summer Trips** – We are launching summer trips soon! Be on the lookout for an email this week about summer trips for more information.

## 40s & 50s

**Trivia Night!** – Join us at 7 p.m. on Wednesday, Jan. 28, at Charlie Hooper's (12 W 63rd St, KCMO) as we show off all our deep and meaningful trivia knowledge! It will be a night to relax and have fun together. No RSVP needed, just come out and have a fun evening!



Goal: 800  
Pledges

Current: 617  
Pledges (77%)

Help us  
reach  
our 2026  
Pledge Goal

Make your annual pledge  
at [villagepres.org/giving](https://villagepres.org/giving)

## CURRENT SERMON SERIES

### Questions Jesus Asked: Jan. 11-Feb. 1

Jesus asked a lot of questions. By one scholar's count, Jesus asked 307 questions recorded in the gospels. Jesus liked to ask questions more than he liked giving answers. As Jesus was both fully God and fully human, you would think he would go around showing off how much he knows, but he did not do that. In fact, we only find eight times that Jesus answered a question asked of him. In this sermon series, we will explore four questions that Jesus asked to better understand Jesus and how he wants us to live today.

**Jan. 25      Which of these three was a neighbor? - Rev. Dr. Diane Janssen Hemmen**  
**Feb. 1        Do you want to get well? - Rev. Zach Walker**

---

## MINISTERS

All members of the congregation

## MINISTRY TEAM

Rev. Dr. Rodger Nishioka, senior pastor • Dr. Elisa Bickers, co-director of music ministry & principal organist  
Brooke Brundige, director of children & family ministry • Lora Garrison, director of international mission  
Rev. Dr. Diane Janssen Hemmen, senior associate pastor • Kathy Lueckert, senior director of business operations  
Dr. Joshua Maize, co-director of music ministry • Alan Olson, director of facilities  
Rev. Anna Owens, Antioch Campus site pastor • Angel Patterson, director of youth ministry  
Rev. Maggie Johnson Phillips, pastor for young adult ministry & worship arts  
Robert Rumold, director of information technology • Carol Solenberger, director of engagement  
Bob Sperry, director of giving & endowment • Sandra Stephens, director of child care  
Rev. Zach Walker, pastor for mission • Rev. Alice Whitson, pastor for communications  
Rev. Dr. Robert H. Meneilly, founding pastor, 1947-1994

---

Large print bulletins are available in the Narthex. Ask an usher to bring you one.

Streaming video of Sunday services is available at [villagepres.org/online](http://villagepres.org/online).

You may call in to listen to a week-delayed broadcast of our Sanctuary service on our worship service phone line: 913-203-1301. You can opt-in to be called automatically at 9:30 a.m. Sundays.

We kindly request that cell phones be turned off during worship.

*Printed on paper from sustainably managed forests.*

*Music for today's service is presented with permission from onelicense.net (#A-705103) and CCS PERFORMmusic (PML8498).*

Village Presbyterian Church • 6641 Mission Rd. Prairie Village, KS 66208 • 913-262-4200 • [villagepres.org](http://villagepres.org)