



# VILLAGE CHURCH

Presbyterian (USA)



We light the candle of Peace.

## Service of Worship

Dec. 7, 2025 • 9 and 11 a.m.

## GOD'S PEOPLE GATHER

Prelude

Dr. Elisa Bickers, piano

Words of Welcome

Rev. Dr. Rodger Nishioka

Introit

*Lost in the Night*  
arr. Kyle S. Haugen; Village Voices (9 a.m.)

*Unto Us is Born a Son*  
by David Willcocks; More Love Chorale (11 a.m.)

The Lighting of the Advent Candle

Alex and William Bolen (9 a.m.)

Susan, Zach, William, and Graham Flanders (11 a.m.)

God of peace, we arrive on this second Sunday of Advent seeking your comfort.

**Draw us closer to you this season.**

Remind us of your steadfast presence.

**In the midst of an uncertain world,**

**give us the gift of peace as a sign of the coming Christ child.**

Let us worship God.

\*Hymn 113

*Angels We Have Heard on High*

Prayer of Confession

Rev. Zach Walker

Surprising God, you sent your angels to announce your coming  
and the plains and the mountains echoed the good news.

**Glory to God in the highest!**

Excited shepherds hurried to worship you and sang songs of joy.

**Glory to God in the highest!**

And yet we are slow to come worship you in the humble manger.

**Forgive us.**

We are so consumed by our worries and anxieties.

**Forgive us.**

We are so busy with school and work and home.

**Forgive us.**

We are so accepting of injustices and sinfulness.

**Forgive us.**

As we wait for your coming on Christmas, help us to turn to you today  
and help us to sing with the angels and shepherds.

**Glory to God in the highest.** (silent prayer)

Assurance of God's Grace

\*Response to Assurance

**Gloria in excelsis Deo! Gloria in excelsis Deo!**

\*Passing the Peace of Christ

## PROCLAMATION OF THE WORD

Prayer for Illumination

Madeline Allen (9 a.m.); Miriam Frey (11 a.m.)

Scripture

Luke 2:8-20 (pg. 933)

Sermon

*The Light of Peace*

## RESPONSE TO THE WORD

\*Hymn 138

*Who Would Think That What Was Needed*

Call for the Offering

Rev. Alice Whitson

Offertory Anthem

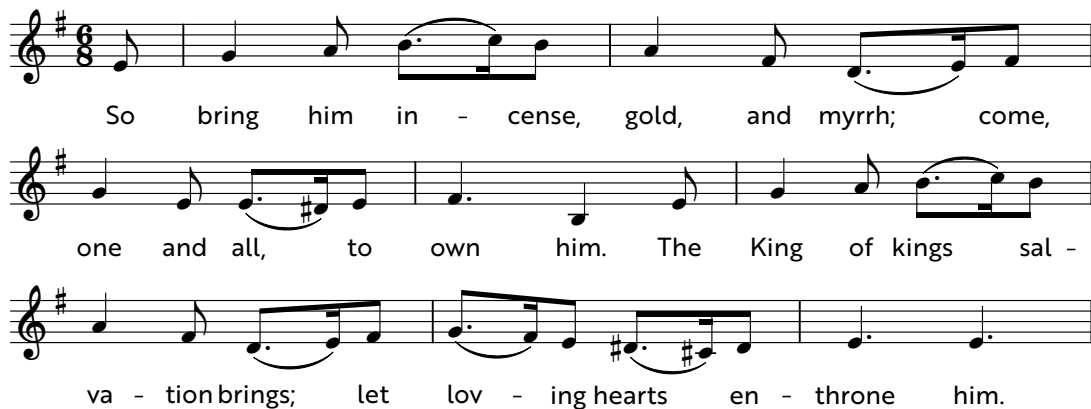
*Noël Nouvelet*

arr. Harold Owen; Village Voices (9 a.m.)

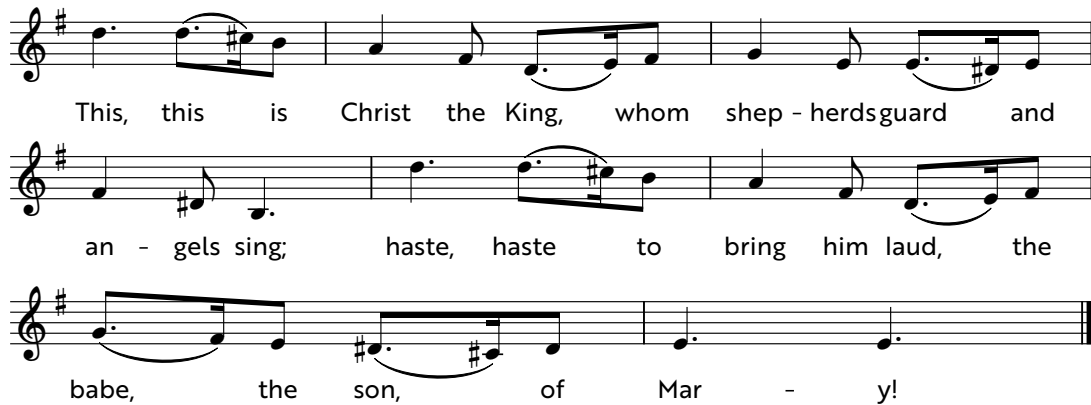
*Ding! Dong! Merrily on High*

arr. Mark Burrows; More Love Chorale (11 a.m.)

\*Response



So bring him in - cense, gold, and myrrh; come,  
one and all, to own him. The King of kings sal -  
va - tion brings; let lov - ing hearts en - throne him.



\*Prayer of Dedication

## THE SACRAMENT OF THE LORD'S SUPPER

Invitation

Prayer of Thanksgiving and The Lord's Prayer

The Lord be with you.

**And also with you.**

Lift up your hearts.

**We lift them up to the Lord.**

Let us give thanks to the Lord our God.

**It is right to give our thanks and praise.**

Holy God, we give you thanks...

**Our Father, who art in heaven, hallowed be thy name.**

**Thy kingdom come, thy will be done, on earth as it is in heaven.**

**Give us this day our daily bread;**

**and forgive us our debts, as we forgive our debtors;**

**and lead us not into temptation, but deliver us from evil.**

**For thine is the kingdom and the power and the glory, forever. Amen.**

Words of Institution

Sharing the Elements

Communion Anthem

*"Et in terra pax hominibus" from Gloria  
 And on Earth peace to those of good will.*

by Antonio Vivaldi; Village Choir

Prayer of Response

## GOD'S PEOPLE ARE SENT

\*Hymn 105 (st. 1, 3, & 5)

*People, Look East*

\*Benediction

\*Benediction Response

Hymn 88 (st. 7)

**O come, Desire of nations, bind all peoples in one heart and mind;  
bid envy, strife, and discord cease; fill the whole world with heaven's peace.  
Rejoice! Rejoice! Emmanuel shall come to thee, O Israel.**

\*Postlude

*In Dulci Jubilo*  
arr. Norman Dello Joio

*\*All who are able may stand*

## TODAY'S MUSIC LEADERS

Conductors: Helen Hofmeister and Dr. Josh Maize  
Keyboardists: Dr. Elisa Bickers, Jan Cohick and Chris Leaver

**The flowers in the chancel today** are given in loving memory of Dorothy and Ken Thein by the Thein family.

**Help Village Fill the Heart**  
to Meet Our 2025 Budget\*



**\$5,711,000**

2025 Funding Goal

**\$4,174,850**

73% Funded

\*Pledge and  
non-pledge gifts

[villagepres.org/giving](https://villagepres.org/giving)



## ADULT FAITH FORMATION

**Throwing It All Away? Recycling and Composting at Village & Beyond** – Date change due to weather: 7-9 p.m. Tuesday, Dec. 9, Room 126. The church has recently expanded its composting and recycling efforts. John Kurmann of Bridging the Gap will help us solve the mystery of which materials belong in which bins.

**Village U: What Are You Waiting For?** – 6:30-8 p.m. Wednesdays, Dec. 3 & 17, Room 132/133. Rev. Dr. Diane Janssen Hemmen explores what this season of waiting and longing has to offer us for the faithful living of our days. Child care available. Register at [villagepres.org/village-u](http://villagepres.org/village-u).

## ENGAGEMENT

**Wednesday Family Dinner** – 5:30-6:30 p.m. Wednesdays, Friendship Hall. Register at [villagepres.org/wfd](http://villagepres.org/wfd). Email [engagement@villagepres.org](mailto:engagement@villagepres.org) to volunteer.

**New Member Luncheon** – TODAY from noon-1:30 p.m., Room 232/233. If you're interested in becoming a member, you're invited to join us today! If you have questions or want to learn more about Village Church, contact [carol.solenberger@villagepres.org](mailto:carol.solenberger@villagepres.org).

**Seniors Afternoon** – 1 p.m. Wednesday, Dec. 10, in the Welcome Center. Bring your own board games, learn to play canasta, and enjoy good company and light refreshments. Bring a friend!

## MISSION MINISTRY

**Star Family drop off today!** – If you sponsored a family through Operation Breakthrough, donation drop off is today in

the south lot from 10 a.m.-12:30 p.m. You can still sponsor a holiday meal for a family of four for \$50. Write checks to Village Church with "Star Family" in the memo.

**Joy Offering** – We invite you to give a special offering for the Village Church Emergency Assistance fund during this Advent season. 100% of donations directly support rent and utility payments for local families. Look for the green giving envelope in your pew or you can give online at [villagepres.org/emergency-assistance](http://villagepres.org/emergency-assistance).

**When households are food insecure**, the holidays tend to add extra stress to their lives. **The Food Pantry** would love donations of proteins: hearty soups, chili, stews, canned meats, etc. For the **Clothes Closet**, consider donating those Christmas and holiday decorations that you didn't have room to put out this year!

## MUSIC MINISTRY

**Our Morning Stars Children's Choir presents "The Nightshift Before Christmas" Musical** – Sunday, December 14, 9 a.m. and 11 a.m. Sanctuary, presented during the morning worship services.

**25<sup>th</sup> Annual Tidings of Joy Christmas Concert** – 3 and 6 p.m. Sunday, Dec. 14, Sanctuary. Featuring the Village Choirs and orchestra. Free admission. Free-will offering to benefit this year's Signature Mission, Kanbe's Markets.

**Te Deum presents "Carols of Olde"** – 7 p.m. Tuesday, Dec. 16, Sanctuary. Join us for a concert celebrating the enduring magic of early Christmas music. Tickets at [te-deum.org](http://te-deum.org).

## PASTORAL CARE

**Congratulations to Our Christmas Cheer Champions!** Over 200 poinsettias were delivered by 71 volunteers yesterday! These volunteers—individuals, couples, families, children—went to individual homes and 44 retirement communities throughout KS and MO. Thank you so much for delivering and visiting. We couldn't do this Advent ministry without you.

**Help us as we search for a new associate pastor for pastoral care** – The task force requests your input. Please take this short survey before Dec. 8: [bit.ly/apncsurvey1](http://bit.ly/apncsurvey1)

## PRESBYTERIAN WOMEN

**2026 Faithful Women of Outstanding Service** honorees are Judy Frame, Julie O'Connor, and Louise Woodward. These women will be honored at the Celebration of Faithful event on April 14. Save the date!

**Operation Breakthrough needs volunteers** to help with year-round tutoring program, one hour/week. Volunteers work one-on-one to assist the children with literacy and mathematics. Email [charlottesdavison@gmail.com](mailto:charlottesdavison@gmail.com) with questions and to volunteer.

**Mahjong Monday** - 6:30-8 p.m. Jan. 12, Heritage Dining Room. Do you play Mahjong? We're looking to start groups to play on the second Monday each month. Please email [carol.solenberger@villagepres.org](mailto:carol.solenberger@villagepres.org) to RSVP to ensure adequate supplies and enough players.

## YOUNG ADULT MINISTRY

**Christmas Party** – 5:30 p.m. Friday, Dec. 12, Rooms 232/233. All young adults (and any kiddos if you have them) are invited for cookies, crafts, and a scavenger hunt at the church. The party continues at Boulevard Brewery at 7:30 p.m. Wear your Christmas pajamas! Register at [bit.ly/VillageYoungAdults](http://bit.ly/VillageYoungAdults).

## YOUTH MINISTRY

**Village High Progressive Dinner tonight!** – 6:30 p.m. Sunday, Dec. 7, Youth Loft. It's Chiefs tailgate time! Wear your Chiefs gear or colors and join us for this year's progressive dinner during youth group.

**Village Middle Christmas Party** – Join us from 6:30-8 p.m. Wednesday, Dec. 10, for our Christmas Party!

## SUNDAY FAITH FORMATION

ADULTS	"Village Forum"	9:30-10:30 a.m.	Room 126
	"The Faith Journey"	10:10-10:50 a.m.	Room 124
YOUTH	Grades 7-12	9-10 a.m.	Room 333
KIDS	Pre-K and 4-yr-olds	9-10 a.m.	Room 106
	Grades K-6	9-10 a.m.	Room 307

**Child care** is available downstairs during both services. Bring infants through 23 mo. to Room 114 and ages 2-3 to Room 109. Parents, please keep your cell phones on!

## CURRENT SERMON SERIES

### Nov. 30-Dec. 24: Advent

Rev. Johann Hinrich Wichern is credited as the inventor of the modern Advent wreath. Wichern was a German Lutheran pastor and a pioneer in urban mission work among the poor. During Advent, children at his mission school would ask daily if Christmas had arrived. In 1839, he took a large wooden ring from an old cartwheel and decorated it with evergreen branches and 24 small red candles and four large white candles. The small candles were lit each weekday, and the white candles were lit each Sunday. Other Protestant churches and then Roman Catholic churches adopted the practice. German Lutheran immigrants brought it to the United States in the 1920s. Each Sunday as we light each candle of Advent, Rev. Dr. Rodger Nishioka will preach on what the candle symbolizes: hope, peace, joy, and love.

<b>Dec. 7</b>	<b>Advent 2: Peace</b>
Dec. 14	Advent 3: Joy
Dec. 21	Advent 4: Love

---

## MINISTERS

All members of the congregation

## MINISTRY TEAM

Rev. Dr. Rodger Nishioka, senior pastor • Dr. Elisa Bickers, co-director of music ministry & principal organist  
Brooke Brundige, director of children & family ministry • Lora Garrison, director of international mission  
Rev. Dr. Diane Janssen Hemmen, senior associate pastor • Kathy Lueckert, senior director of business operations  
Dr. Joshua Maize, co-director of music ministry • Alan Olson, director of facilities  
Rev. Anna Owens, Antioch Campus site pastor • Angel Patterson, director of youth ministry  
Rev. Maggie Johnson Phillips, pastor for young adult ministry & worship arts  
Robert Rumold, director of information technology • Carol Solenberger, director of engagement  
Bob Sperry, director of giving & endowment • Sandra Stephens, director of child care  
Rev. Zach Walker, pastor for mission • Rev. Alice Whitson, pastor for communications  
Rev. Dr. Robert H. Meneilly, founding pastor, 1947-1994

---

Large print bulletins are available in the Narthex. Ask an usher to bring you one.

Streaming video of Sunday services is available at [villagepres.org/online](http://villagepres.org/online).

You may call in to listen to a week-delayed broadcast of our Sanctuary service on our worship service phone line: 913-203-1301. You can opt-in to be called automatically at 9:30 a.m. Sundays.

We kindly request that cell phones be turned off during worship.

*Printed on paper from sustainably managed forests.*

*Music for today's service is presented with permission from onelicense.net (#A-705103) and CCS PERFORMmusic (PML8498).*

Village Presbyterian Church • 6641 Mission Rd. Prairie Village, KS 66208 • 913-262-4200 • [villagepres.org](http://villagepres.org)